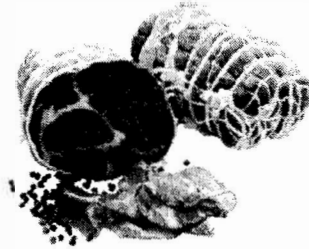




Salumeria Biellese LLC



Product	Salumeria Biellese Sweet Coppa
Shelf Life	6 months
Net Weight	3*-5 pounds
LxWxH	L9 W4 H 2.5
Case pack	per customer request
Case LxWxH	
Pallet Configuration	per customer request
Ingredients	Pork, Salt, Wine, Dextrose, Brown Sugar, Spices, Sodium Nitrate
Description	A Berkshire pork shoulder is trimmed and seasoned with wine and our heirloom spice mixture. Once spiced, it is cured and aged to achieve a natural earthy sweetness only found in a perfect Coppa. Hailing from