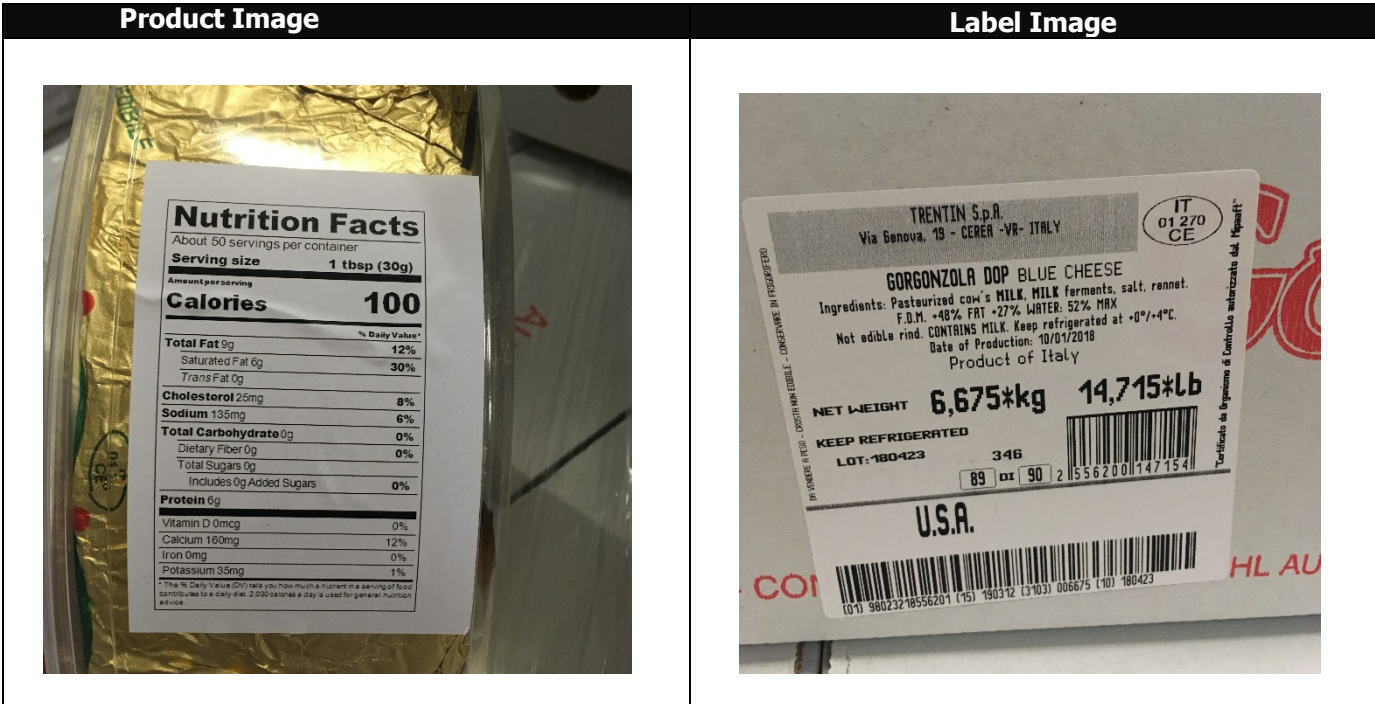


# Product Specification Sheet

## GORGONZOLA PDO CREMIG

Country of Origin: ITALY  
 Date code: Progressive number  
 Production date: N.A.



## Product Properties

**Ingredient/Product Statement:**

Pasteurized Milk, salt, rennet.  
 Contains Milk.

<b>Kosher (Y/N; Certification)</b>	<b>N</b>	<b>Rind (Y/N)</b>	<b>Y</b>
<b>Halal (Y/N)</b>	<b>N</b>	<b>Rind Edible (Y/N)</b>	<b>N</b>
<b>Organic (Y/N)</b>	<b>N</b>	<b>Preservatives (Y/N)</b>	<b>N</b>
<b>Piece Count (Case)</b>	<b>4</b>	<b>Lactose Free (Y/N)</b>	<b>N</b>
<b>Maturity/Aged</b>	<b>/</b>	<b>Pasteurized/Thermalized/Raw/Other</b>	<b>Pasteurized</b>
<b>Milk Type</b>	<b>Cow</b>		
<b>Rennet Type</b>	<b>ANIMAL</b>		

**Shelf Life:**

<b>Shelf Life from Production</b>	<b>NA</b>	<b>Shelf Life if Frozen</b>	<b>N/A</b>
<b>Storage Temperature</b>	<b>+39 +42 °F</b>	<b>Shelf Life Defrosted</b>	<b>N/A</b>

**Paletization:**

<b>Cases Per Pallet</b>	60	<b>Case Dimensions (in.)</b>	15.3"L x 15.3"W x 4.3"H	
<b>Block &amp; Tier</b>	6 x 10	<b>Pallet Dimension (in.)</b>	39.3L x 47.2W x 48.8"H	
<b>Unit Dimensions (in.)</b>	"10L x "7.5W x "3.7H	<b>Gross Weight (Avg.)</b>	14.3	lbs
<b>Packaging Type</b>	NONE	<b>Net Weight (Avg.)</b>	13.2	lbs

**Physical Properties:**

<b>Color</b>	White and straw-colored
<b>Cheese Type</b>	Gorgonzola PDO cremig
<b>Aroma &amp; Flavor</b>	Tasty and tasty flavor
<b>Texture</b>	Pasta with dark green veins

**Chemical Analysis:**

		<b>Specification</b>	<b>Range</b>
<b>Dry matter</b>	%	<48.5	
<b>Fat in Dry Matter</b>	%	>48	
<b>Water Activity</b>		0.94	
<b>pH</b>		6	

**Microbiological limits:**

<b>Parameter</b>	<b>Target Value</b>	<b>Units</b>
<b>E. Coli <math>\beta</math>-gluc.</b>	<100	UFC/g
<b>Staphylococcus Coag. Pos. 37°C</b>	< 100	UFC/g
<b>Salmonella spp</b>	Absent	P/A in 25 g
<b>Listeria monocytogenes</b>	Absent	P/A in 25 g

**Nutritional Fatcs:**

(*Daily Value % Based on a 2,000 Calorie Diet)		
<b>Serving Size:</b>	30g (1 oz)	
<b>Servings Per Container: 50</b>	various	
	Per Serving	DV%
Calories:	100	
Total Fat (g):	9	12
Saturated Fat (g):	6	30
<i>Trans</i> Fat (g):	0	0
Cholesterol (mg):	25	8
Sodium (mg):	135	6
Total Carbohydrate (g):	0	0
Dietary Fiber (g):	0	0
Sugars (g):	0	0
Added Sugars (g):	0	0
Protein (g):	6	12
Vitamin D (mcg):	0	0
Calcium (mg):	160	12
Iron (g):	0	0
Potassium (mg):	35	1